



Southern Indiana CWMA: Regional Coverage with Local Focus

Beginning Operations: mid-2008

Organizing Committee:

- Teena Ligman
- Janet Eger
- Ron Rathfon
- Jerry Lish
- Tom Tremain

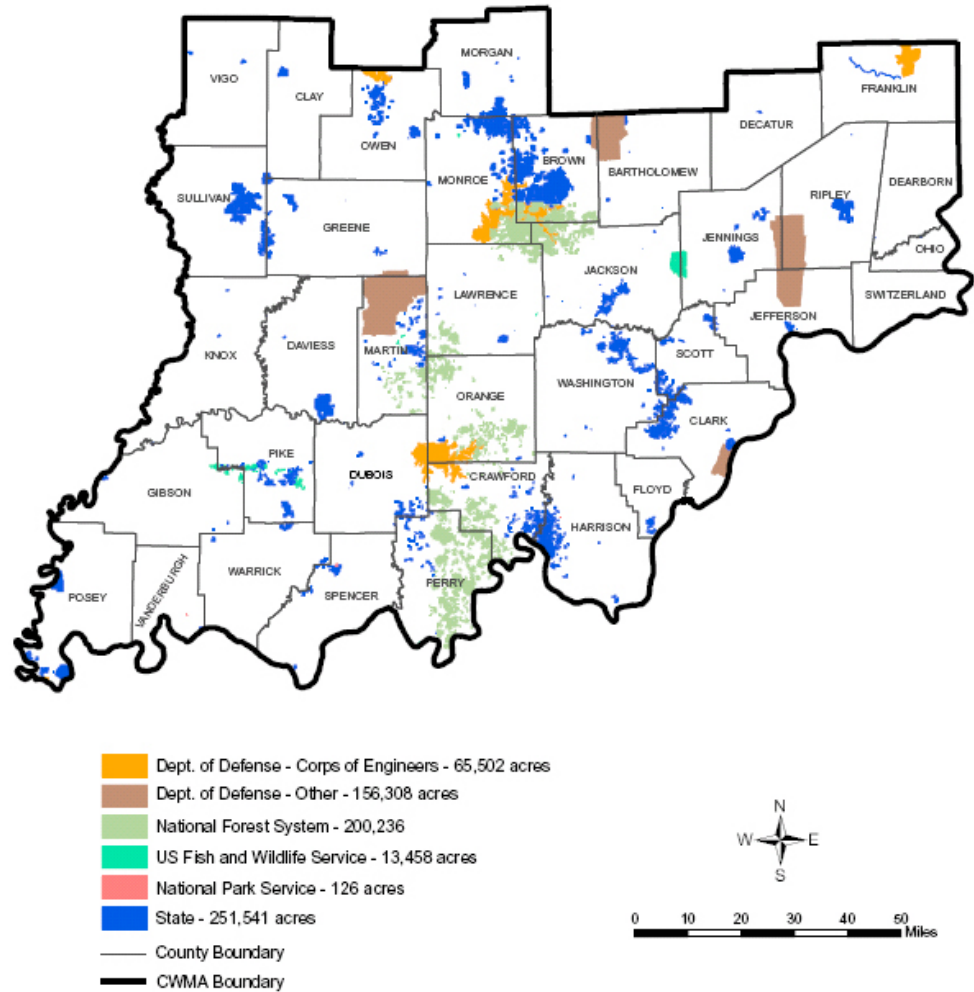
Geography

Southern Third of
Indiana

36 Counties

Follows boundaries of
Interior Low Plateau
Eco-Region – an area
with common habitats
and Alien Invasive
threats

State and Federal Ownership within the CWMA Boundary



Different CWMA Model – Umbrella Organization?

- One CMWA for Southern Indiana:
 - Single “charter”, strategic plan, Steering Committee
 - Central staff/office for organization, grant writing, accounting, etc.
 - Single point of contact for key agencies (DNR, Hoosier NF, et al.)
- Local Chapters:
 - Develop and implement local projects and operating plan
 - Focus on local priorities and resources
 - Utilize central resources and funding of overall CWMA
 - Could be existing organizations (Muscatatuck Wildlife Society, Friends of Brown County State Park, RC&Ds, etc.)
- Standing Committees:
 - Focus on a single objective across geographies (Kudzu Task Force, Aquatic Invaders committee, etc.)
 - Focus on a single function (Communication/Education committee, Projects committee, etc.)

Southern IN CWMA – so far...

- Spring 2007 Alien Invasive Workshop at Spring Mill State Park
- White River RC&D explores CWMA possibility
- 3 other Southern IN RC&Ds express support
- 4 Regional public meetings, numerous presentations at organization meetings
- Input, interest and support from 60 to 80 people representing more than 30 organizations

Southern IN CWMA – so far...

- April 2008: Partners' Strategy Session to develop organizational direction
- May 2008: PTI Grant application rejected
- Fall 2008:
 - Organized as IN non-profit corporation
 - Applied for federal 501-C-3 status
 - Held initial Steering Committee meeting
 - Established 3 standing committees and began planning for 2009 Communication, Early Detection and Control projects

Southern IN CWMA – Next Steps...

- Receive Tax-exempt status
- Clarify Partners' benefits and responsibilities:
 - Sustaining Partners – some funding commitment?
 - Grassroots Partners – provide local projects/volunteers?
- Implement Muscatatuck Demonstration Project:
 - Remove/Treat invasive shrubs
 - Train volunteers on survey, mapping and control techniques
 - Publicize/Educate local citizens on CWMA mission and offer them free invasive surveys
- Promote and assist with Partners' local projects
- Continue to build list of Partners and volunteers

Southern IN CWMA – Next Steps...

- Continue search for funding for dedicated staff...
- Investigate potential grants...
- Request support from partners...
- Look for new sources of revenue...
- Determine how to tap into Federal economic stimulus package...
- **Find \$\$\$\$\$\$!!!!!**